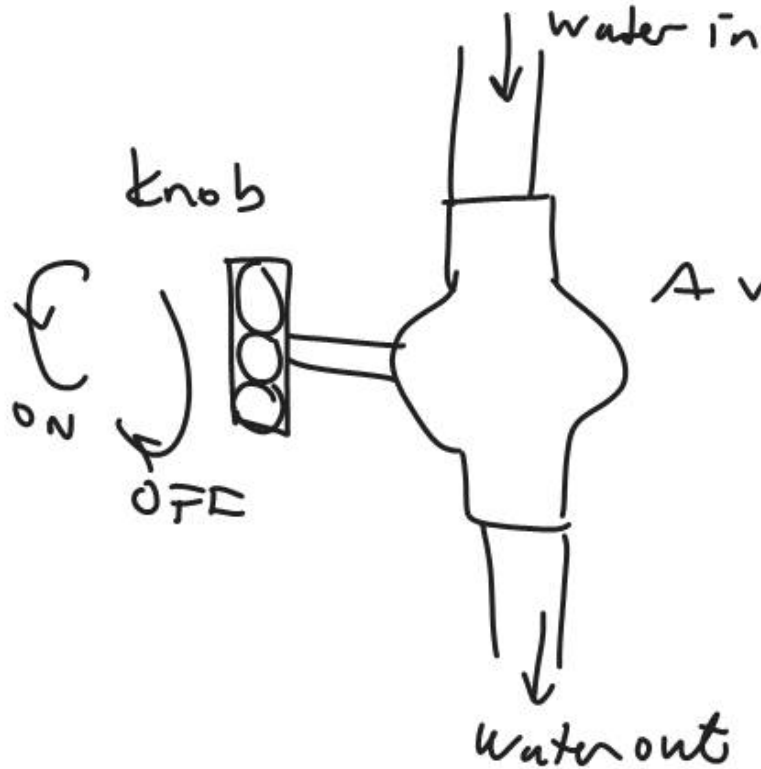


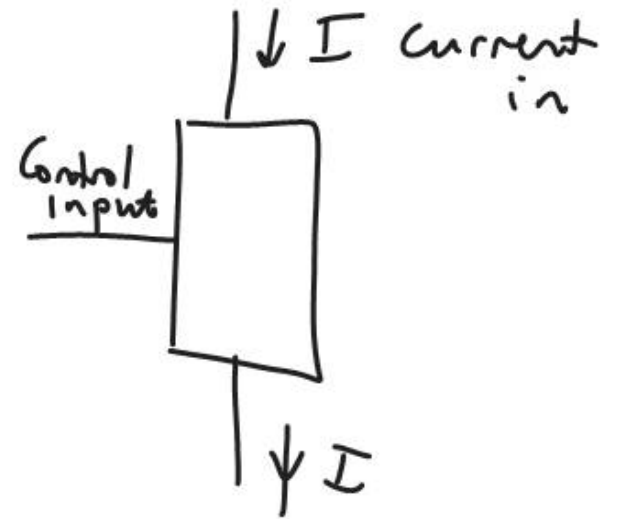
# TRANZISTORS

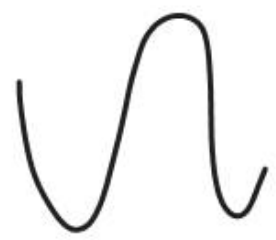
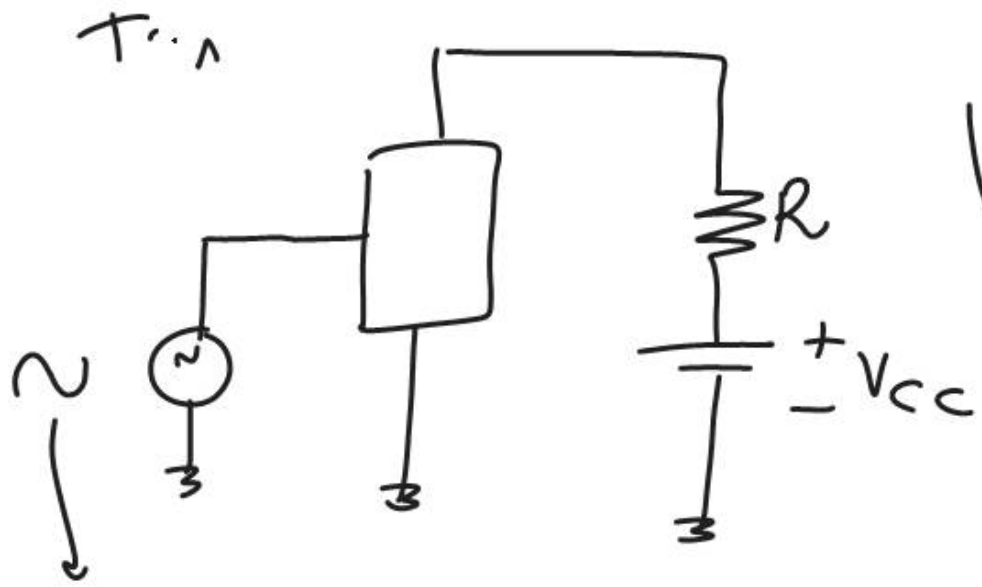
21.03.2011

A transistor is a switch or an amplifier, or an impedance transformer



A valve ~ Transistor as a switch





an amplified signal at the output

Transistor as an amplifier

a small time varying signal

Amplification is a linear operation (generally) of a transistor.

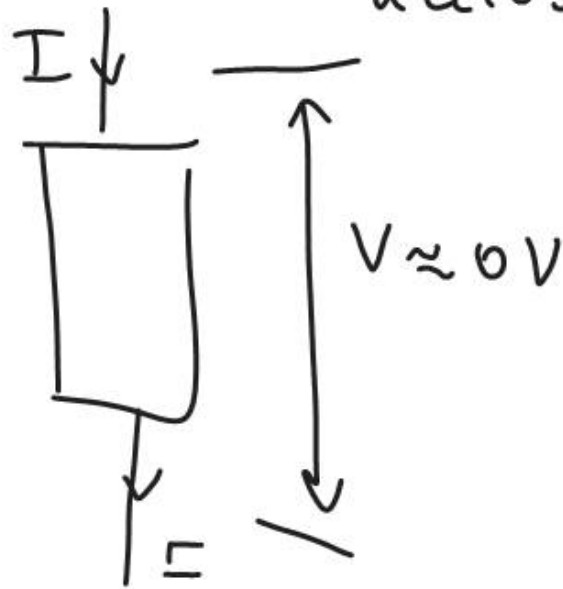


In computers the transistors are used as switches (ON, OFF)

This is a nonlinear operation of transistors.

ON means:

The device flows the current and there is 0 voltage drop across the device (transistor)



OFF means: No current flowing through the device (transistor)

